



Castle Wharf, Chester Road, Manchester

£2,400 PCM

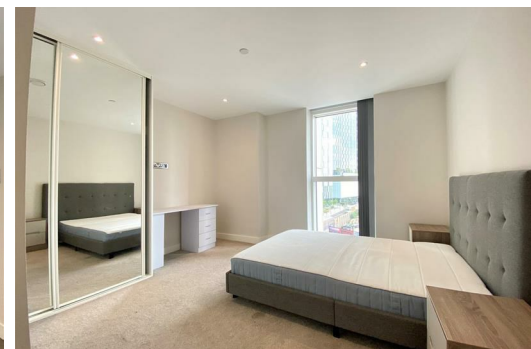
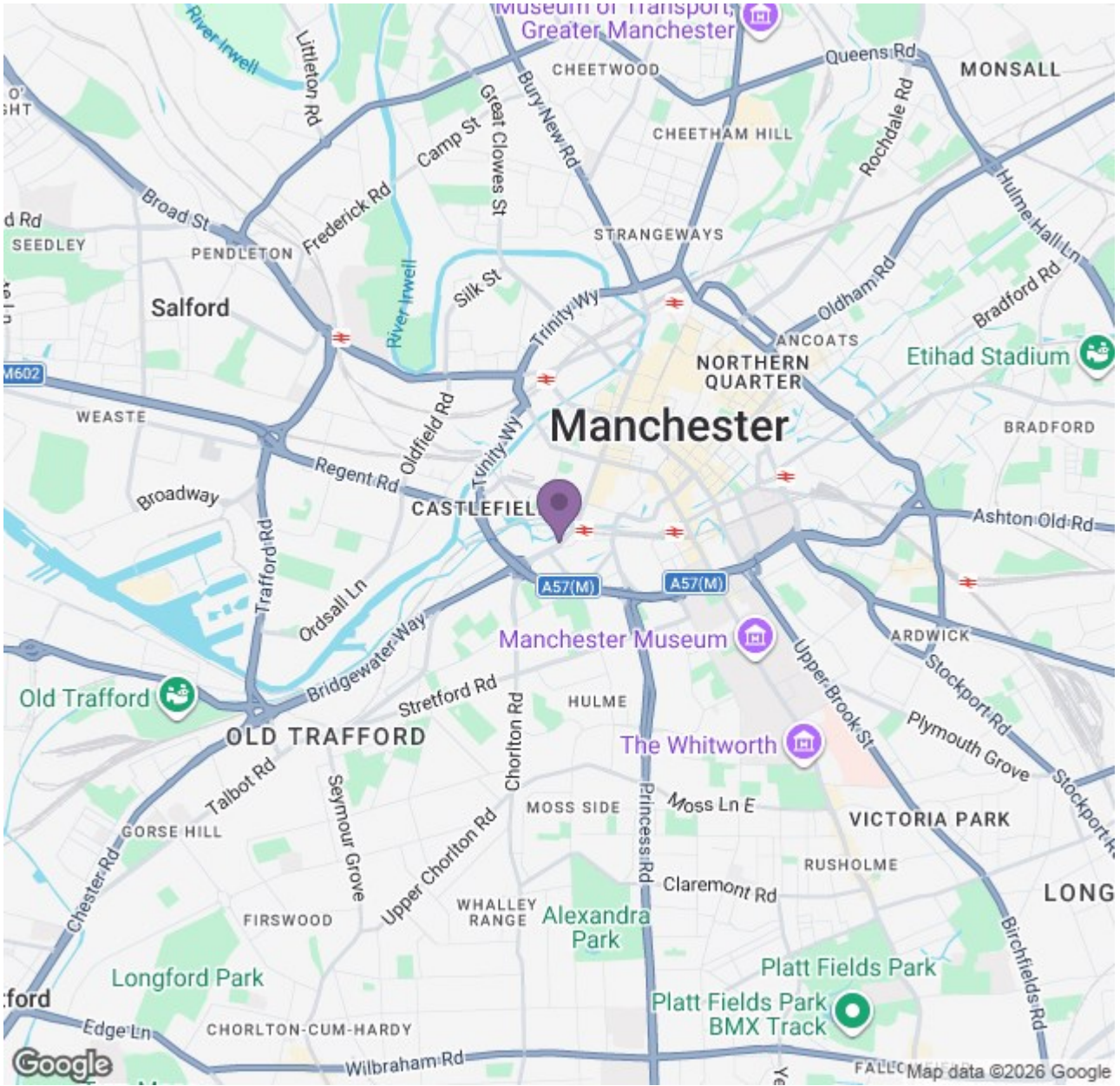
An ultra-stylish, fully furnished two-bedroom apartment available to rent within the exceptional Castle Wharf development. Designed for high-spec, contemporary living, this impressive residence offers stylish interiors paired with breathtaking views. Residents enjoy exclusive access to a range of premium on-site amenities, including a state-of-the-art gymnasium, spa and sauna, residents' lounges, meeting rooms and a terrace. Widely regarded as one of Manchester's most sought-after addresses, the development comprises 188 one-, two- and three-bedroom apartments.

The amenities truly set Castle Wharf apart. From resistance training to cardio-focused workouts, the gymnasium caters to all fitness needs, while the luxurious spa and sauna provide the perfect space to unwind after a long day.

Situated on the fourth floor, this sleek two-bedroom apartment is immediately impressive. Floor-to-ceiling windows in the bedrooms and a generously sized balcony allow natural light to flood the space, creating a bright and uplifting atmosphere throughout. The sophisticated wooden flooring complements the high-spec integrated kitchen, which features premium finishes, fully integrated appliances, a fitted wine chiller and USB sockets throughout for added convenience.

Wake up to abundant natural light in the beautifully appointed bedrooms and take in stunning views from the covered balcony. The main bathroom is spacious and fully tiled with a subtle marble-effect finish, complete with a rain shower over the bath. The master bedroom further benefits from a stylish en-suite bathroom with a large walk-in shower.





Energy Efficiency Rating		Environmental Impact (CO ₂) Rating	
Current	Target	Current	Target
85	85	B	B
85	85	B	B